

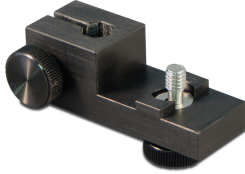


**MAUS Spare Parts Catalog
1/1/2026**

**10-1 Airport Road
New Richmond, WI 54017
Office: 833-999-NDTS (6387)**



Part Number:
10-10-A21
Description:
MAUS / AUSS WHEEL SUPPORT ASSY



Part Number:
10-10-A22
Description:
MAUS / AUSS, WHEEL SUPPORT CLAMP ASSY



Part Number:
10-10-A23
Description:
MAUS / AUSS, ARM ASSY, WHEEL SUPPORT



Part Number:
10-10-A28
Description:
WHEEL SUPPORT (WHEEL ONLY), ASSY



Part Number:
10-128-A21
Description:
SCAN ARM OFFSET BRACKET ASSY WITH 5" SLIDING RANGE



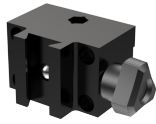
Part Number:
10-14-A21
Description:
MAUS / AUSS, SPRING SLIDE ASSEMBLY WITH 3 & 6 DEGREE ADAPTOR PLATE



Part Number:
10-16-A2101
Description:
SINGLE SENSOR MOUNT ASSY, FOR ALL MAUS / AUSS HAND SCANNERS



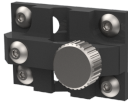
Part Number:
10-16-A2104
Description:
SENSOR MOUNT ASSY, NDTs, MIA SENSOR



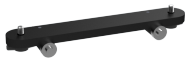
Part Number:
10-16-A2220
Description:
MAUS / AUSS, DOVETAIL & HEX ROD BRACKET ASSY



Part Number:
10-16-A244
Description:
MAUS / AUSS, SPRING LOADED SENSOR MOUNT FOR VARIABLE STROKE SCANNER



Part Number:
10-16-A264
Description:
CLAMP BRACKET ASSY, SENSOR MOUNT



Part Number:
10-16-A271
Description:
QUICK ATTACH PIN PLATE ASSY



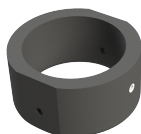
Part Number:
10-16-A273
Description:
HOSE WRANGLER MOUNT ASSY, DR 11



Part Number:
10-16-A274
Description:
VACRS MANIFOLD ASSY, VSA, DR 11, (AND CAN BE USED WITH THE RED / B3 SCANNER AS WELL)



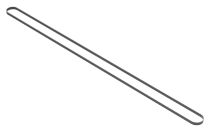
Part Number:
10-16-A290
Description:
YOKE, MAUS / AUSS, LARGE DIAMETER SENSOR SHOE YOKE ASSY, PITCH / CATCH, VACRS RESONANCE



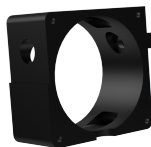
Part Number:
10-16-A292
Description:
PITCH & CATCH SENSOR SLEEVE ASSY. 1.5" ID



Part Number:
10-16-A294
Description:
MAUS / AUSS, DUAL SENSOR YOKE. LONG THROW YOKE



Part Number:
10-16-A47
Description:
MAUS / AUSS, VARIABLE STROKE SCANNER, DRIVE BELT



Part Number:
10-16-M212
Description:
BASE, MOTOR HOUSING



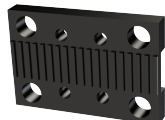
Part Number:
10-16-M213
Description:
BOTTOM, CAP, MOTOR HOUSING



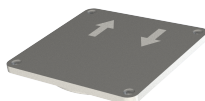
Part Number:
10-16-M214
Description:
COVER, MOTOR HOUSING



Part Number:
10-16-M215
Description:
BRACKET, VERTICAL CONNECTOR, LINEAR SLIDE



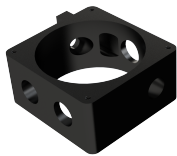
Part Number:
10-16-M216
Description:
RACK BRACKET, BELT CLAMP



Part Number:
10-16-M22
Description:
TOP, CAP, RESOLVER HOUSING



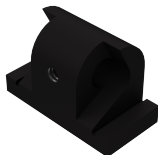
Part Number:
10-16-M222
Description:
VACRS MANIFOLD, DR 11



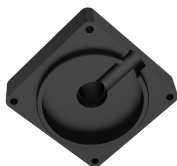
Part Number:
10-16-M23
Description:
TOP, RESOLVER HOUSING



Part Number:
10-16-M24
Description:
TUBE, RESOLVER HOUSING



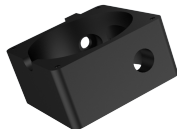
Part Number:
10-16-M240
Description:
BRACKET, SENSOR MOUNT



Part Number:
10-16-M25
Description:
BLOCK, MOUNT, RESOLVER HOUSING



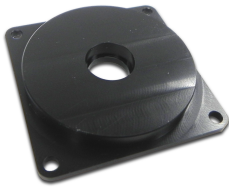
Part Number:
10-16-M257
Description:
BAR, CLAMP BRACKET



Part Number:
10-16-M26
Description:
BASE, RESOLVER HOUSING



Part Number:
10-16-M260
Description:
NUT, PLATE, QUICK ATTACH



Part Number:
10-16-M27
Description:
BOTTOM, CAP, RESOLVER HOUSING



Part Number:
10-16-M28
Description:
TOP, CAP, MOTOR HOUSING



Part Number:
10-16-M289
Description:
MOUNT, DOVETAIL, OFFSET BRACKET



Part Number:
10-16-M29
Description:
TOP, MOTOR HOUSING



Part Number:
10-16-M293
Description:
SLEEVE, 1.50", PITCH & CATCH SENSOR



Part Number:
10-16-M419
Description:
RAIL, AL EXTRUSION, 702MM LONG



Part Number:
10-19-A21
Description:
MAUS / AUSS, (BLACK) FLEXIBLE VACUUM TRACK ASSY,
42" LONG



Part Number:
10-19-A22
Description:
INLET VALVE ASSY, TRACK ASSY



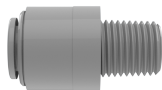
Part Number:
10-19-A27
Description:
MAUS / AUSS FLEXIBLE TRACK CHECK VALVE ASSY



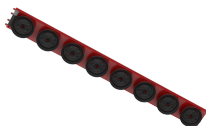
Part Number:
10-19-M211
Description:
MAUS / AUSS, (RED) FLEXIBLE VACUUM TRACK, WITHOUT HARDWARE, 42" LONG



Part Number:
10-19-M26
Description:
MAUS / AUSS, (BLACK) FLEXIBLE VACUUM TRACK, WITHOUT HARDWARE, 42" LONG



Part Number:
10-19-P43
Description:
MAUS / AUSS, FLEXIBLE TRACK, INLET VALVE MALE CONNECTOR



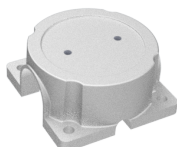
Part Number:
10-21-A21
Description:
MAUS / AUSS, (RED) FLEXIBLE VACUUM TRACK ASSY, 42" LONG



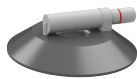
Part Number:
10-23-A21
Description:
VACUUM CUP SAFETY RESTRAINT KIT. INCLUDES:



Part Number:
10-23-A25
Description:
SAFETY RESTRAINT VACUUM CUP.



Part Number:
10-23-A42
Description:
MODIFIED MOUNT, VACUUM CUP



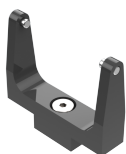
Part Number:
10-23-M14
Description:
PAD, VACUUM, CONCAVE FACE, 6" DIAMETER



Part Number:
10-26-A21
Description:
MAUS / AUSS, GIMBLE RING FOR RESONANCE AND UT SENSOR SLEEVE



Part Number:
10-26-A22
Description:
MAUS / AUSS, GIMBLE RING FOR RESONANCE SENSOR VACRS SHOE



Part Number:
10-27-A21
Description:
MAUS / AUSS, LOW FRICTION YOKE ASSY



Part Number:
10-28-A11
Description:
VARIABLE STROKE SCANNER SHIPPING CASE ASSY, WITH FOAM



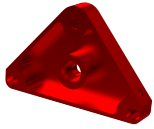
Part Number:
10-2-A230
Description:
MAUS, QUICK ATTACH, TRIANGULAR, SCAN BAR TO CARRIAGE



Part Number:
10-2-A417
Description:
CARRIAGE BODY CABLE STRAIN RELIEF, 0.375 NPT.



Part Number:
10-2-M212
Description:
PLATE, WEAR, CARRIAGE



Part Number:
10-2-M214
Description:
MOUNT, TRIANGULAR, CARRIAGE



Part Number:
10-2-M223
Description:
CLAMP, RESOLVER, CARRIAGE



Part Number:
10-2-M227
Description:
GEAR, SPUR, PIN HUB REMOVED, 18 TEETH, CARRIAGE



Part Number:
10-2-M23
Description:
HANDLE, ENGAGE AND DISENGAGE, CARRIAGE



Part Number:
10-2-M236
Description:
BRACKET, TRIANGLE MOUNT, CARRIAGE



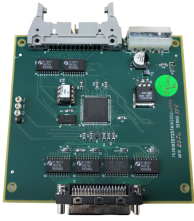
Part Number:
10-2-M26
Description:
MOUNT, PIN PLATE, QUICK ATTACH. WITHOUT THUMBSCREWS OR QUICK RELEASE PINS.



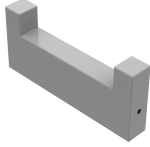
Part Number:
10-2-M416
Description:
EYEBOLT, SHOULDERLESS, CARRIAGE



Part Number:
10-36-H21
Description:
REFURBISHED, MAUS DATA ACQUISITION SYSTEM, LAPTOP, WITH PCMCIA CARD SLOT, MAUS V VERSION 2.17



Part Number:
10-37-H15
Description:
MAUS-MLZ INTERFACE BOARD



Part Number:
10-37-M23
Description:
BRACE, BRACE ASSY



Part Number:
10-49-A21
Description:
SENSOR SLEEVE ASSY FOR ALL 1/4" PULSE-ECHO SENSORS



Part Number:
10-49-A214
Description:
DUAL EDDY CURRENT SENSOR SLEEVE ASSY HOLDER.
(Supersedes P / N SPC-292-DH)



Part Number:
10-49-A215
Description:
ASSEMBLY, SPC-292 SINGLE EDDY CURRENT SENSOR
HOLDER WITH BRUSH



Part Number:
10-49-A217
Description:
ASSEMBLY, SPC-327 SINGLE EDDY CURRENT SENSOR
HOLDER WITH BRUSH



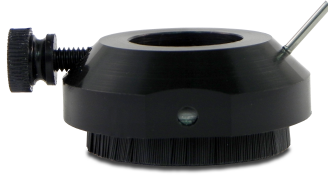
Part Number:
10-49-A22
Description:
MAUS / AUSS, SENSOR SLEEVE ASSY, 7 / 8" ID
SLEEVE FOR 1 / 2"



Part Number:
10-49-A24
Description:
MAUS / AUSS, SENSOR SLEEVE ASSY, 110 & 160 (170)
kHz RESONANCE SENSORS



Part Number:
10-49-A26
Description:
MAUS / AUSS, SENSOR SLEEVE ASSY, 110, 170, 270, & 320 kHz RESONANCE SENSOR



Part Number:
10-49-A28
Description:
MAUS / AUSS, OUTER BUBBLER HOUSING



Part Number:
10-49-M210
Description:
MAUS / AUSS, INNER BUBBLE HOUSING, 3 / 8" x 24 THREAD



Part Number:
10-49-M211
Description:
MAUS / AUSS, INNER BUBBLE HOUSING, SPECIAL 7 / 16" x 27 THREAD



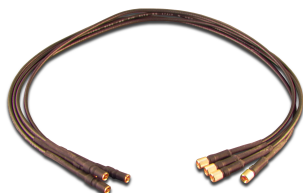
Part Number:
10-510-C13
Description:
BNC MALE TO BNC MALE (RG58) 50 OHM COAXIAL CABLE ASSEMBLY, 3FT LONG.



Part Number:
10-510-C145
Description:
VHDCI MALE TO VHDCI MALE UNIVERSAL SCSI CABLE 0.5 METER LONG



Part Number:
10-510-C146
Description:
VHDCI MALE TO VHDCI MALE UNIVERSAL SCSI CABLE 1 METER LONG



Part Number:
10-510-C154
Description:
MAUS, CABLE ASSY, UT & RESONANCE SENSORS. CANNON TO MICRODOT CONNECTORS, 19" LONG. RED (B3) SCANNER



Part Number:
10-510-C158
Description:
MAUS PCM INTERFACE BOARD, WITH CABLE



Part Number:
10-510-C216
Description:
CABLE ASSY, SENSOR, BLACK, 11. CANNON TO MICRODOT, For use with the legacy RED scanner.



Part Number:
10-510-C217
Description:
MAUS GREEN SENSOR CABLE, 11" LONG. SOLD EACH



Part Number:
10-510-C218
Description:
MAUS, UT & Resonance sensor cable. Cannon to Microdot Connectors, 14" Long. Red(B3) Scanner.



Part Number:
10-510-C219
Description:
CABLE ASSY, SENSOR, GREEN, 14" LONG



Part Number:
10-510-C220
Description:
MAUS, CONTROL CABLE ASSY, CHASSIS TO VARIABLE STROKE SCANNER 46 PIN, 16FT LONG



Part Number:
10-510-C228
Description:
UT SENSOR CABLES FOR THE DR-11 & VSA SCANNERS, BLACK, 00 LEMO TO MICRODOT, 14" LONG. SOLD EACH



Part Number:
10-510-C236
Description:
CABLE ASSY, CONTROL, HAND ENCODER TO MAUS



Part Number:
10-510-C25
Description:
MAUS V INTERFACE CABLE, CHASSIS TO LAPTOP, 48" LONG



Part Number:
10-510-C253
Description:
CABLE ASSY, MAUS, DUAL MICRODOT MIA PROBE WITH LEMO.



Part Number:
10-510-C26
Description:
MAUS V, CABLE ASSY, CHASIS TO LAPTOP INTERFACE, 32" LONG



Part Number:
10-510-C268
Description:
MAUS V, CABLE ASSY, SHIELDED SENSOR CABLE, 2 CH, 30 PIN, 16' LONG.



Part Number:
10-510-C277
Description:
UT SENSOR CABLES FOR THE DR-11 AND VSA SCANNERS, BLACK, WITH LEMO TO MICRODOT, 18" LONG



Part Number:
10-52-A21
Description:
MAUS / AUSS, SPRING SLIDE ASSY, HIGH ANGLE 15 & 20 DEGREES



Part Number:
10-540-A1114
Description:
MAUS V CHASSIS & MAUS-MLZ CHASSIS SHIPPING CASE WITH CUSTOM FOAM



Part Number:
10-540-G1113
Description:
MAUS / AUSS MINI CART "P / N 15-560-G11 has superseded P / N 10-540-G113"



Part Number:
10-540-G1237
Description:
MAUS / AUSS, LATEX, BOOTS FOR UT DRIBBLER
ADAPTER, SET OF 12



Part Number:
10-580-S111
Description:
SPO-6244 BMM-3, MIA SENSOR



Part Number:
10-595-T120
Description:
MAUS, Connector Pin Extraction Tool, Trim Trio



Part Number:
10-64-A21
Description:
ELECTRIC DUAL VAC ASSY, 115VAC (50 / 60Hz)
VERSION. INCLUDES 2 EA. 16' HOSES.



Part Number:
10-6-A213
Description:
3 INCH MAUS HAND SCANNER ASSY



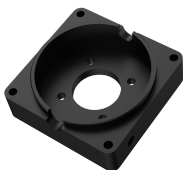
Part Number:
10-6-A214
Description:
3 INCH SCANNER BRACKET AND CLAMP ASSY



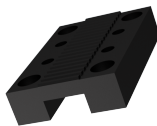
Part Number:
10-6-A237
Description:
PIVOTING ROLLER ASSY, B3 CARRIAGE



Part Number:
10-6-A257
Description:
DUAL SENSOR MOUNT ASSY FOR THREE INCH SCANNER



Part Number:
10-6-M210
Description:
BLOCK, MOUNT, MOTOR HOUSING, B3



Part Number:
10-6-M211
Description:
BRACKET, STANDOFF, B3



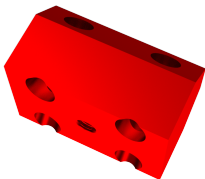
Part Number:
10-6-M22
Description:
MAUS, BAR SCANNER ASSEMBLY, SPACER PLATE



Part Number:
10-6-M222
Description:
MAUS, STIFFENER STRAP. MOTOR COVERS TO SCAN ARM FRAME



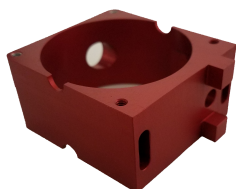
Part Number:
10-6-M236
Description:
BOTTOM, CAP, MOTOR HOUSING, B3



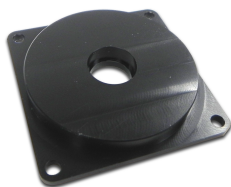
Part Number:
10-6-M238
Description:
BLOCK, BEARING, B3 CARRIAGE



Part Number:
10-6-M239
Description:
MAUS, B3 SCAN ARM, SENSOR AND COUPLANT MANIFOLD



Part Number:
10-6-M245
Description:
BASE, MOTOR & RESOLVER HOUSING, B3



Part Number:
10-6-M28
Description:
BOTTOM, CAP, RESOLVER HOUSING, B3



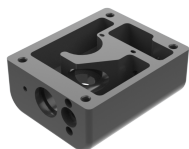
Part Number:
10-6-M430
Description:
FRONT BRACKET, ALUM, THREE INCH SCANNER



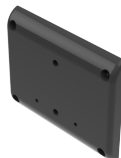
Part Number:
10-70-A21
Description:
YOKE FOR 1-13 / 16" WIDE SENSOR HOLDER & #10-32 MOUNT ASSY



Part Number:
10-7-A21
Description:
ARRAY HAND ENCODER ASSY



Part Number:
10-7-M22
Description:
HOUSING, HAND ENCODER



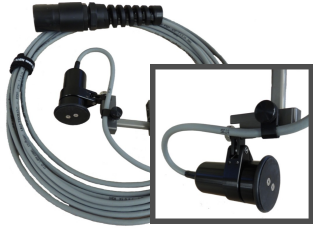
Part Number:
10-7-M23
Description:
HOUSING COVER, HAND ENCODER



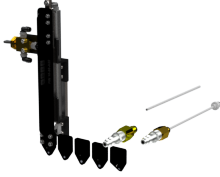
Part Number:
10-7-M24
Description:
HANDLE, HAND ENCODER



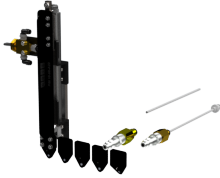
Part Number:
10-7-M25
Description:
FRONT MOUNT PLATE, HAND ENCODER



Part Number:
10-87-A23
Description:
NDTS MINI MAUS. SPLASH PROOF SINGLE WHEEL MAUS ENCODER



Part Number:
10-88-A21
Description:
MAUS / AUSS, 4" STROKE AIR SLIDE ASSY, FACTORY NEW



Part Number:
10-88-A22
Description:
MAUS / AUSS, 5" STROKE AIR SLIDE ASSY, FACTORY NEW



Part Number:
10-88-A23
Description:
MAUS / AUSS AIR SLIDE, 4" & 5" PRESSURE HOSE ASSEMBLY



Part Number:
10-98-M22
Description:
BRACE, PCIe RETENTION



Part Number:
10-99-A21
Description:
MAUS CHASSIS PERFORATED FRONT PLATE



Part Number:
11-107-A21
Description:
MAUS / AUSS, 110 & 170KHz RESONANCE SENSOR VACRS SHOE ASSY



Part Number:
11-107-A23
Description:
MAUS / AUSS, RESONANCE SENSOR, VACRS SHOE ASSY



Part Number:
11-510-C231
Description:
POWER SUPPLY, 24V MODIFIED CABLE, 3.5 FT, VACRS II



Part Number:
11-5-A21
Description:
VACRS II ASSY



Part Number:
11-5-A210
Description:
PLUG HOSE ASSY, VACRS



Part Number:
11-5-A211
Description:
WIDE VACRS ARRAY YOKE, #8-32 MOUNT ASSY



Part Number:
11-5-A213
Description:
PURGE HOSE ASSY, VACRS



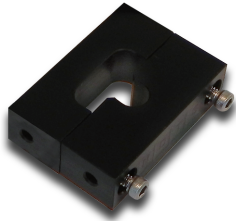
Part Number:
11-5-A223
Description:
LONG YOKE #10-32 MOUNT ASSY



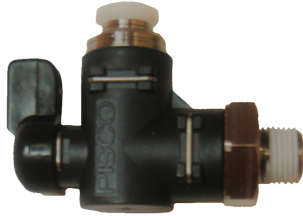
Part Number:
11-5-A234
Description:
LONG YOKE #8-32 MOUNT ASSY, VACRS



Part Number:
11-5-A24
Description:
VACRS ARRAY SHOE ASSY DESIGNED FOR ARRAY WITH
CASE DIMENSIONS OF 3.4"L x 0.500"W x 1.2"T



Part Number:
11-5-A28
Description:
HOSE WRANGLER, VACRS 02



Part Number:
11-5-A413
Description:
MODIFIED BALL UNION VALVE, VACRS



Part Number:
11-5-M226
Description:
STABILIZER, WATER PUMP INLET CONNECTOR, VACRS



Part Number:
11-5-M25
Description:
BLOCK, 3.2 ARRAY HOLDER, VACRS



Part Number:
11-5-M26
Description:
GASKET, 3.2 ARRAY HOLDER, VACRS



Part Number:
11-5-M27
Description:
PLATE, MOUNTING, 3.2 ARRAY HOLDER, VACRS



Part Number:
12-25-A21
Description:
MAUS / AUSS, DUAL VAC ASSY, WITH 2 HOSES



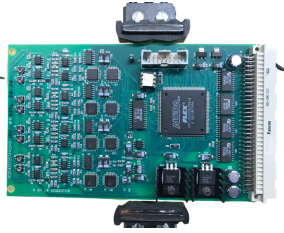
Part Number:
12-25-A24
Description:
16' HOSE ASSY, DUAL VAC



Part Number:
15-5-A23
Description:
MAUS / AUSS, PE ULTRASONIC SENSOR SET: 4ea PE
TRANSDUCERS, 4ea SENSOR CABLES, 4 ea SLEEVES



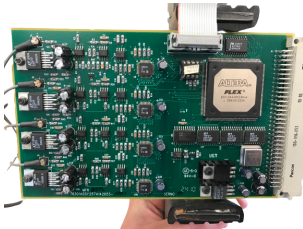
Part Number:
257A142032-1001
Description:
MAUS, MOTION CONTROL BOARD



Part Number:
257A142045-1001
Description:
CCA, 16-bit CW ACQUISITION BOARD



Part Number:
257A142049
Description:
MAUS, PROGRAMMABLE POWER SUPPLY



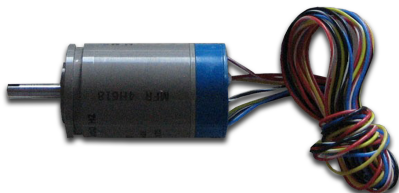
Part Number:
257A142053-1001
Description:
MAUS, CW SIGNAL CONDITIONING CCA BOARD



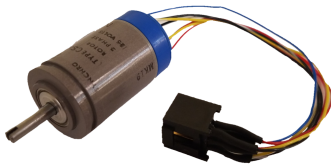
Part Number:
99-16-M147
Description:
MAUS / AUSS, PULLEY, FOR MOTOR AND RESOLVER



Part Number:
99-510-C126
Description:
CABLE ASSY, CONTROL CABLE EXTENSION, BAR SCANNER
TO MAUS V CHASSIS, 16' LONG.



Part Number:
99-510-C132
Description:
RESOLVER, STRAPPED PLUG ASSY - (the old PN is
99-520-A114)



Part Number:
 99-510-C143
Description:
 MAUS RESOLVER FOR THE SCAN ARM, WITH PLUG ASSY



Part Number:
 99-510-C159
Description:
 CABLE ASSY, MLZ LED INDICATOR



Part Number:
 99-510-C279
Description:
 CABLE ASSY, NDT INSTRUMENT CABLE, 00 LEMO TO MICRODOT, 6FT



Part Number:
 99-520-E1125
Description:
 ADAPTER CORD, IEC 60320-C14 to NEMA 5-15R, 1' LONG



Part Number:
 99-520-E114
Description:
 BNC, VERTICAL PCB BULKHEAD JACK RECEPTACLE



Part Number:
 99-520-E115
Description:
 SWITCH, SELECTOR, 2 DIRECTION, GREEN LED, 22MM



Part Number:
 99-520-E1157
Description:
 SWITCH, PUSHBUTTON, PANEL MOUNT, SPST MOMENTARY, 0.5 AMP 125



Part Number:
 99-520-E116
Description:
 PUSH BUTTON SWITCH, LAMP MODULE, SCREWCLAMP TERMINATION



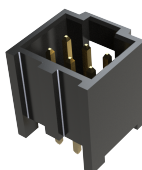
Part Number:
99-520-E117
Description:
BLOCK, MOUNT COLLAR, SCREW CLAMP TERMINATION, 22MM



Part Number:
99-520-E123
Description:
SOCKET, CRIMP TERMINAL, 24 AWG, CONTACT SIZE 16



Part Number:
99-520-E128
Description:
MAUS, 12 PIN PLUG CONNECTOR



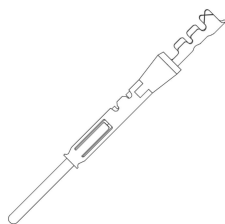
Part Number:
99-520-E129
Description:
CONNECTOR, RECTANGULAR, INTERCONNECT, HEADER AND WIRE HOUSING, 3A RTG, 2.54MM PITCH X 6 CONTACTS



Part Number:
99-520-E130
Description:
CONNECTOR, RECTANGULAR, INTERCONNECT, FEMALE RECEPTACLE / SOCKET CRIMP HOUSING, 3A RATING, 2.54MM PITC



Part Number:
99-520-E14
Description:
BUTTON, PUSH, RED, GUARDED, PANEL MOUNT



Part Number:
99-520-E141
Description:
MAUS CONNECTOR CRIMP PINS



Part Number:
99-520-E142
Description:
CONNECTOR, RECTANGULAR, INTERCONNECT, FEMALE RECEPTACLE



Part Number:
 99-520-E144
Description:
 CONNECTOR, RECTANGULAR, INTERCONNECT, FEMALE RECEPTACLE



Part Number:
 99-520-E145
Description:
 CABLE, MIL SPEC M27500, BRAIDED SHIELD, 600V RATING, 24 AWG



Part Number:
 99-520-E1476
Description:
 MAUS, VARIABLE STROKE SCANNER DRIVE MOTOR



Part Number:
 99-520-E15
Description:
 BUTTON, PUSH, BLK, GUARDED, PANEL MOUNT



Part Number:
 99-520-E154
Description:
 CONNECTOR, RECEPTACLE, MALE, PANEL MOUNT, 12 PIN



Part Number:
 99-520-E155
Description:
 CONNECTOR, RECEPTACLE, MALE, PANEL MOUNT, 46 PIN



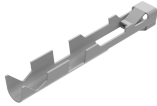
Part Number:
 99-520-E156
Description:
 CONNECTOR, RECEPTACLE, MALE, PANEL MOUNT, 30 PIN



Part Number:
 99-520-E158
Description:
 CONNECTOR, RECEPTACLE, PANEL MOUNT FOR MALE 7 PIN



Part Number:
99-520-E16
Description:
GEARMOTOR, 3540K024C158+30/1 246:1+MG10



Part Number:
99-520-E162
Description:
SOCKET, CRIMP TERMINAL, 22-24 AWG, CONTACT SIZE



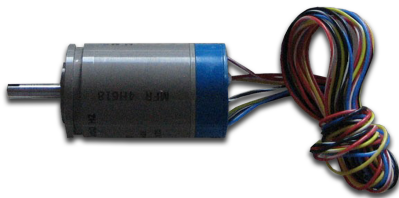
Part Number:
99-520-E163
Description:
PLUG, STRAIGHT, CIRCULAR KEYING, COAX CABLE



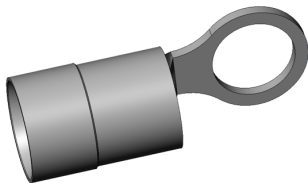
Part Number:
99-520-E178
Description:
MAUS, 46 PIN PLUG CONNECTOR SOCKET



Part Number:
99-520-E179
Description:
CONNECTOR, RECTANGULAR, INTERCONNECT, HEADER AND WIRE HOUSING, 3A RATING, 2.54MM PITCH X 6 CONTACTS



Part Number:
99-520-E18
Description:
MAUS, RESOLVER, SCAN AXIS & TRACK CARRIAGE



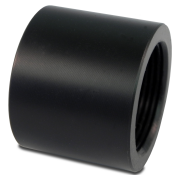
Part Number:
99-520-E180
Description:
TERMINAL, RING, CRIMP-ON NYLON INSULATED, 26-22 WIRE GAGE



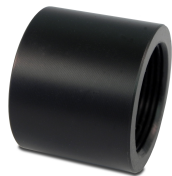
Part Number:
99-520-E19
Description:
CONTROL, SWITCH BOARD FOR MAUS VARIABLE STROKE SCANNERS.



Part Number:
99-520-E213
Description:
MAUS, ADAPTER, 12 PIN CONNECTOR



Part Number:
99-520-E282
Description:
MAUS, ADAPTOR, 46 PIN CONNECTOR



Part Number:
99-520-E287
Description:
MAUS, ADAPTOR, 30 PIN CONNECTOR



Part Number:
99-530-F1116
Description:
EYEBOLT, W / O SHOULDER, NOT RATED FOR LIFTING,
0.250



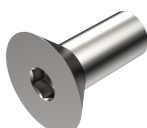
Part Number:
99-530-F112
Description:
SCREW, CAP, SKT HD, 0.3125-18 X 0.750 LG, 316 SST



Part Number:
99-530-F113
Description:
SCREW, CAP, SKT HD, 0.3125-18 X 0.875 IN, 316 SS



Part Number:
99-530-F1132
Description:
#8-32 SHOULDER BOLT FOR MAUS CARRIAGE BEARING ASSY



Part Number:
99-530-F114
Description:
SCREW, CAP, FLAT HD, 0.3125-18 X 0.750 LG, 316 SS



Part Number:
99-530-F118
Description:
SCREW, CAP, SKT HD, SHLDR, 0.3125-18 X 0.3130



Part Number:
99-530-F122
Description:
SCREW, CAP, FLAT HD, #8-32 X 0.875 LG, 316 SST



Part Number:
99-530-F123
Description:
SCREW, CAP, FLAT HD, #8.32 X 1.500 LG, 18-8 SST



Part Number:
99-530-F128
Description:
#10-32 SHOULDER BOLT FOR DR-11 & VSA CARRIAGE BEARING ASSY



Part Number:
99-530-F145
Description:
YOKE SHOULDER BOLT, #8-32



Part Number:
99-530-F158
Description:
SCREW, CAP, SKT HD, #4-40 X 0.313 LG, 18-8 SST, PLAIN FINISH, COMPLIANT



Part Number:
99-530-F162
Description:
SCREW, THUMB, KNURLED HD, #6-32 X 0.375 LG, SS



Part Number:
99-530-F17
Description:
SCREW, CAP, BUTTON HEAD, #6-32 X 0.250 LG, 316 SST



Part Number:
99-532-F110
Description:
WASHER, FLAT, 0.172 ID X 0.375 OD X 0.06 THICK,
18-8



Part Number:
99-532-F141
Description:
WAVE WASHERS FOR MAUS CARRIAGE TRUCK SHOULDER BOLT



Part Number:
99-532-F16
Description:
WASHER, FLAT, 0.500 OD X 0.266 ID X 0.040 THK,
316 SST



Part Number:
99-534-F113
Description:
NUT, HEX, 0.375-16 X 0.330 THK, 316 SST



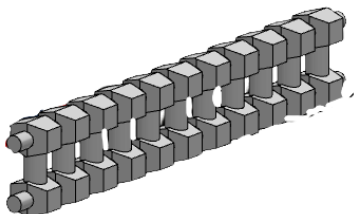
Part Number:
99-534-F16
Description:
NUT, HEX, #8-32 X 0.125 THICK, 316 SST



Part Number:
99-534-F20
Description:
NUT, HEX, 1/4-20 X 0.188 THICK, 316 SST



Part Number:
99-540-G110
Description:
TUBE, ROUND, FLEXIBLE, 0.375 OD X 0.250 ID X 0.06



Part Number:
99-540-G1119
Description:
DRIVE BELT FOR THE 3" MAUS SCANNER



Part Number:

99-540-G1134

Description:

TUBE, SOLDER & SHIELD, SHIELD TERMINATOR, 2.7MM ID X 18.25MM



Part Number:

99-540-G1135

Description:

TUBE, SHRINK, 2 TO 1 SHRINK RATIO, 0.500 ID BEFORE SHRINKING



Part Number:

99-540-G129

Description:

TUBE, TRIPLE ROUND, FLEXIBLE, 0.250 OD X 0.125 ID. SOLD BY THE FOOT.



Part Number:

99-540-G151

Description:

TUBE, ROUND, FLEXIBLE, 0.250 OD X 0.125 ID X 0.063



Part Number:

99-540-G189

Description:

PLUG, SOLID, STRAIN RELIEF



Part Number:

99-540-G19

Description:

MAUS / AUSS, SCAN ARM DRIVE BELT. SOLD BY THE FOOT



Part Number:

99-560-M1108

Description:

MAUS, DELRIN CARRIAGE BODY CABLE STRAIN RELIEF.



Part Number:

99-560-M1153

Description:

WHEEL, 1.125" OD X 0.250" ID X 0.375" W, ALUM CORE W/ ML6-70



Part Number:
99-560-M1154
Description:
WHEEL, 1.250" OD X 0.250" ID X 0.375" W, ALUM
CORE W/ ML6-70



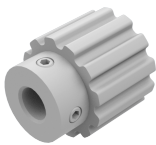
Part Number:
99-560-M126
Description:
SPRING, COMPRESSION, 0.043 WIRE DIAMETER X 0.406
HOLE DIAMETER



Part Number:
99-560-M132
Description:
HANDLE, ADJUSTABLE, 0.250-20 X 0.750 STUD, BLACK
NYLON



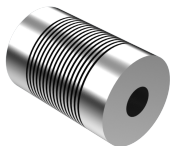
Part Number:
99-560-M139
Description:
PIN, DOWEL, 0.125 OD X 0.625 LG, 316 SST



Part Number:
99-560-M142
Description:
PULLEY, TIMING, 5.08 MM PITCH X 12 TEETH



Part Number:
99-560-M143
Description:
SPACER, SHAFT, 0.250 ID X 0.375 OD X 0.250 LG, AL



Part Number:
99-560-M144
Description:
MAUS / AUSS, SC SERIES FLEXIBLE SHAFT COUPLING
RESOLVER COUPLING



Part Number:
99-560-M145
Description:
MAUS / AUSS, CARRIAGE DRIVE BELT



Part Number:
99-560-M148
Description:
O-RING, SQUARE CROSS SECTION, 0.750 ID X 1.000 OD



Part Number:
99-560-M151
Description:
PIN, DOWEL, 0.125 OD X 0.250 LG, 316 SST



Part Number:
99-560-M152
Description:
MAUS / AUSS, YOKE TO PLATE SPACER



Part Number:
99-560-M154
Description:
THREADED INSERT, NON-LOCKING, #6-32 ID X #12-28 OD



Part Number:
99-560-M158
Description:
MAUS / AUSS PIN, PUSH BUTTON, QUICK RELEASE,
0.375-24 X 0.375 THRD LG X 1.250 LG, SS



Part Number:
99-560-M169
Description:
FITTING, STRAIN RELIEF, 0.375 NPT X 2.480 BODY LG



Part Number:
99-560-M170
Description:
MAUS CARRIAGE CABLE, PLUG END STRAIN RELIEF



Part Number:
99-560-M172
Description:
4-40 KEENSERT, MINIATURE, NON-LOCKING S/S, EXT
THD= #10-32



Part Number:
 99-560-M177
Description:
 GEAR, SPUR, 36 TEETH, 0.125 IN BORE DIA, ACE



Part Number:
 99-560-M178
Description:
 GEAR, SPUR, 36 TEETH, 0.250 IN BORE DIA, ACE



Part Number:
 99-560-M184
Description:
 MAUS / AUSS, CARRIAGE FLANGED DRIVE PULLEY



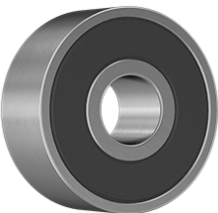
Part Number:
 99-560-M185
Description:
 FITTING, STRAIN RELIEF, PG21 X 4.480 BODY LG X 0.



Part Number:
 99-560-M186
Description:
 PIN, DOWEL, 0.125 OD X 0.375 LG, 316 SST



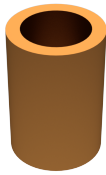
Part Number:
 99-560-M2157
Description:
 SPRING BOLT, W/ SHLDR, #6-32



Part Number:
 99-562-B11
Description:
 BEARING, BALL, DBL SEALED, 0.125 ID X 0.375 OD X 0.1



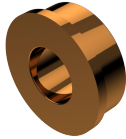
Part Number:
 99-562-B122
Description:
 BEARING, SLEEVE, FLANGED, 0.188 ID X 0.500 OD, SINTERED BRONZE



Part Number:
99-562-B13
Description:
BEARING, SLEEVE, 0.313 ID X 0.438 OD X 0.625,
LENGTH



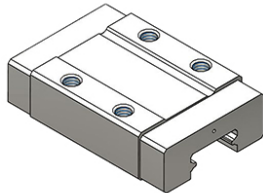
Part Number:
99-562-B15
Description:
MAUS / AUSS, RESOLVER SHAFT, BEARING



Part Number:
99-562-B16
Description:
BEARING, SLEEVE, FLANGED, 0.250 ID, SINTERED
BRONZE



Part Number:
99-562-B19
Description:
BEARING, BALL, DBL SHIELDED, 0.1875 ID, .375 OD,
WIDTH .1250



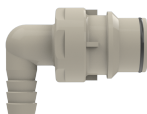
Part Number:
99-563-B12
Description:
BEARING, BALL, TRUCK, 9MM WIDE LINEAR SLIDE, FOR
B3



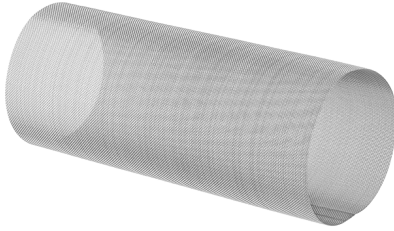
Part Number:
99-570-A4195
Description:
MODIFIED PUMP, VACUUM, TWO THRU-FLOW SILENCERS
CUT TO LENGTH



Part Number:
99-570-P110
Description:
BARB, HOSE, SLIM LINE, .0625" ID, 303 SST



Part Number:
99-570-P1113
Description:
PLUG, BARBED 90 DEG ELBOW, 0.375 CPLG X 0.750

**Part Number:**

99-570-P1117

Description:STRAINER, MESH SCREEN SIZE 80, FOR NDTS PART #
99-570-P191**Part Number:**

99-570-P1121

Description:

FILTER, WATER, INLINE, 250 MICRON, FOR 0.375 T

**Part Number:**

99-570-P1130

Description:

TUBULATION, 0.035 ID X 0.061 OD X 0.551, SST

**Part Number:**

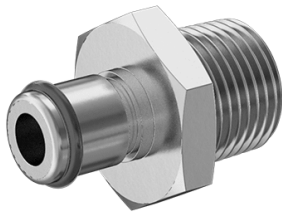
99-570-P1131

Description:

HOUSING, T-STRAINER, 0.375 FNPT PORT, MESH SIZE

**Part Number:**

99-570-P1132

Description:VACRS O2 REPLACEMENT FILTER, POLYPROPYLENE
CARTRIDGE**Part Number:**

99-570-P1144

Description:

PLUG, MALE PIPE TUBE SOCKET, 0.250 CPLG X 0.438

**Part Number:**

99-570-P116

Description:

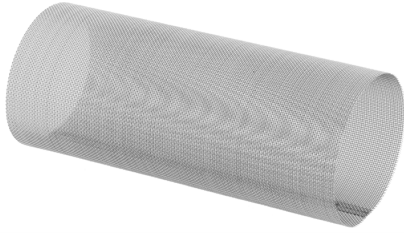
WYE, PUSH TO CONNECT, 0.250 TUBE OD X 0.156 TUBE

**Part Number:**

99-570-P119

Description:

SUCTION CUP, AL INSERT, BLK POLYURETHANE



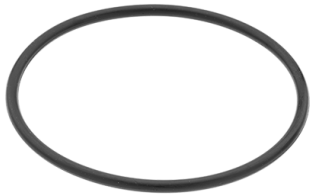
Part Number:
99-570-P1202
Description:
REPLACEMENT MESH STRAINER SCREEN FOR THE VACRS= &
VACRS DUAL VAC



Part Number:
99-570-P1216
Description:
SMALL O-RINGS FOR VACRS HOSE CONNECTORS. 5 / 16"
OD x 3 / 16" ID



Part Number:
99-570-P1217
Description:
LARGE O-RINGS FOR VACRS HOSE CONNECTORS. 7 / 16"
OD x 5 / 16" ID



Part Number:
99-570-P1235
Description:
SEAL, 4.625 DIA, REPLACEMENT FOR NDTs PART#
99-570-P1122



Part Number:
99-570-P1236
Description:
SEAL, 3/8 NPT T-STRAINER, REPLACEMENT



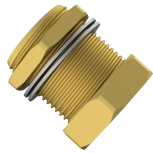
Part Number:
99-570-P1263
Description:
O-RING, ROUND CROSS SECTION, DUAL VAC
REPLACEMENT, 0.070 W X



Part Number:
99-570-P1264
Description:
PUMP, WATER, VARIABLE SPEED DIAPHRAM, 12V OR 24V,
4.5 GPM



Part Number:
99-570-P143
Description:
TEE, BRANCH, PUSH TO CONNECT, 0.250 NPT X 0.250 TU



Part Number:
99-570-P144
Description:
COUPLING, PANEL MOUNT, 0.250 NPT ID X 0.750-20 OD



Part Number:
99-570-P145
Description:
GAUGE, VACUUM, PANEL MOUNT, 30 TO 0 IN OF HG X 0.125



Part Number:
99-570-P147
Description:
COUPLING, QUICK DISCONNECT, PANEL MOUNT, VALVED



Part Number:
99-570-P149
Description:
ELBOW, FEMALE PIPE SWIVEL 90 DEG PUSH TO CONNECT



Part Number:
99-570-P173
Description:
PLUG, MALE PIPE TUBE SOCKET, 0.250 CPLG X 0.438 PL



Part Number:
99-570-P174
Description:
PLUG, MALE PIPE TUBE SOCKET, 0.125 CPLG X 0.313 PL



Part Number:
99-570-P179
Description:
REGULATOR, FLOW, 0.250 TUBE X 0.250 TUBE



Part Number:
99-570-P182
Description:
TUBE, ROUND, FLEXIBLE, 0.125 OD X 0.0625 ID X 0.031



Part Number:
99-570-P184
Description:
O-RING, SQUARE CROSS SECTION, 0.688 ID X 0.813 OD



Part Number:
99-580-S163
Description:
UT LINEAR ARRAY, 5MHz, 64 ELE, 0.050" PITCH,
0.315" ELEV, 0.500" HW DELAY, ITT CANNON, 15' CABLE.



Part Number:
99-590-Z17
Description:
SPRING, TORSION, LH WOUND MAUS / AUSS SENSOR
MOUNTS



Part Number:
99-590-Z18
Description:
SPRING, TORSION, RH WOUND MAUS/AUSS SENSOR MOUNTS



Part Number:
AE02911
Description:
170 kHz RESONANCE SENSOR FACTORY NEW, COC INCLUDED



Part Number:
AE02912
Description:
320 kHz RESONANCE SENSOR FACTORY NEW, COC INCLUDED



Part Number:
AE02913
Description:
270 kHz RESONANCE SENSOR FACTORY NEW, COC INCLUDED



Part Number:
AE02914
Description:
110 kHz RESONANCE SENSOR FACTORY NEW, COC INCLUDED



Part Number:
MAUS-A4 110/170 KHZ
Description:
RESONANCE SENSOR SET: 110kHz AND 170kHz (Qty 2).
(includes transducer holders & coaxial cables).



Part Number:
MAUS-A4 270/320 KHZ
Description:
RESONANCE SENSOR SET: 270kHz and 320kHz (Qty 2)
(includes transducer holders & coaxial cables).



Part Number:
MAUS-A5
Description:
EDDY CURRENT SENSOR SET: 500 - 10 kHz STANDARD,
600Hz to 2 M



Part Number:
MAUS-A6
Description:
PITCH CATCH SENSOR: 20kHz STANDARD



Part Number:
MAUS-A7
Description:
MAUS, MIA SENSOR, STANDARD, WITH HOLDER



Part Number:
MAUS-B1
Description:
MAUS, MINI MAUS SCANNER (use with Phased Array)



Part Number:
MAUS-DR-11.1
Description:
VARIABLE STROKE X-Y SCANNER AND TRACK ASSEMBLY
KIT. 25" MAX STROKE. INCLUDES:



Part Number:
RDG012TM
Description:
TRANSDUCER, HIGH RESOLUTION, 1 MHz, 0.250" DIA,
REMOVABLE DELAY LINE, TOP MOUNT MICRODOT CONNECTOR DIA



Part Number:
RDG022TM
Description:
*TRANSDUCER, HIGH RESOLUTION, 2.25MHz, 0.250" DIA,
REMOVABLE DELAY LINE, TOP MOUNT MICRODOT CONNECTOR*



Part Number:
RDG052TM
Description:
*TRANSDUCER, HIGH RESOLUTION, 5 MHz, 0.250" DIA,
REMOVABLE DELAY LINE, TOP MOUNT MICRODOT CONNECTOR*



Part Number:
RDG102TM
Description:
*TRANSDUCER, HIGH RESOLUTION, 10 MHz, 0.250" DIA,
REMOVABLE DELAY LINE, TOP MOUNT MICRODOT CONNECTOR*



Part Number:
RDG152TM
Description:
*TRANSDUCER, HIGH RESOLUTION, 15 MHz, 0.250" DIA,
REMOVABLE DELAY LINE, TOP MOUNT MICRODOT CONNECTOR*



Part Number:
RDL2-.500
Description:
0.250" DIAMETER DELAY LINE .500" LONG (Set of 5)



Part Number:
RDL2-0.75
Description:
0.250" DIAMETER DELAY LINE 0.75" LONG (set of 5)



Part Number:
RDL2-1.00
Description:
0.250" DIAMETER DELAY LINE 1.00" LONG (set of 5)



Part Number:
RDL2-1.25
Description:
0.250" DIAMETER DELAY LINE 1.25" LONG (set of 5)

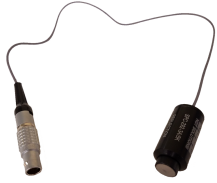


Part Number:

SPC-292-3A/1K

Description:

MAUS / AUSS, 1-20KHz LOW FREQUENCY EDDY CURRENT SENSOR PROBE



Part Number:

SPC-292-3A/50K

Description:

MAUS / AUSS, EDDY CURRENT SENSOR PROBE, HIGH FREQUENCY, REFLECTION, 50-500kHz



Part Number:

SPC-292-3A/5K

Description:

MAUS / AUSS, 5-50kHz LOW FREQUENCY EDDY CURRENT SENSOR PROBE



Part Number:

SPC-327/100-10K

Description:

MAUS / AUSS, LOW FREQUENCY EDDY CURRENT PROBE (100Hz - 10kHz)



Part Number:

SPC-327/100-1K

Description:

MAUS / AUSS, LOW FREQUENCY EDDY CURRENT PROBE (100Hz - 1kHz)



Part Number:

SPC-327/100-500HZ

Description:

MAUS / AUSS, LOW FREQUENCY EDDY CURRENT PROBE (100Hz - 500Hz)