

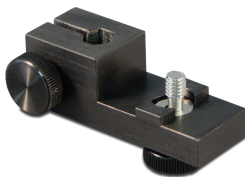


**AUSS Spare Parts Catalog  
1/1/2026**

**10-1 Airport Road  
New Richmond, WI 54017  
Office: 833-999-NDTS (6387)**



**Part Number:**  
10-10-A21  
**Description:**  
MAUS / AUSS WHEEL SUPPORT ASSY



**Part Number:**  
10-10-A22  
**Description:**  
MAUS / AUSS, WHEEL SUPPORT CLAMP ASSY



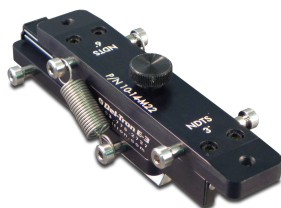
**Part Number:**  
10-10-A23  
**Description:**  
MAUS / AUSS, ARM ASSY, WHEEL SUPPORT



**Part Number:**  
10-10-A28  
**Description:**  
WHEEL SUPPORT (WHEEL ONLY), ASSY



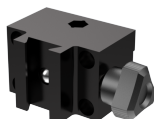
**Part Number:**  
10-128-A21  
**Description:**  
SCAN ARM OFFSET BRACKET ASSY WITH 5" SLIDING RANGE



**Part Number:**  
10-14-A21  
**Description:**  
MAUS / AUSS, SPRING SLIDE ASSEMBLY WITH 3 & 6 DEGREE ADAPTOR PLATE



**Part Number:**  
10-16-A2101  
**Description:**  
SINGLE SENSOR MOUNT ASSY, FOR ALL MAUS / AUSS HAND SCANNERS



**Part Number:**  
10-16-A2220  
**Description:**  
MAUS / AUSS, DOVETAIL & HEX ROD BRACKET ASSY



**Part Number:**  
 10-16-A244  
**Description:**  
 MAUS / AUSS, SPRING LOADED SENSOR MOUNT FOR  
 VARIABLE STROKE SCANNER



**Part Number:**  
 10-16-A271  
**Description:**  
 QUICK ATTACH PIN PLATE ASSY



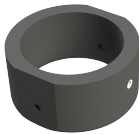
**Part Number:**  
 10-16-A273  
**Description:**  
 HOSE WRANGLER MOUNT ASSY, DR 11



**Part Number:**  
 10-16-A274  
**Description:**  
 VACRS MANIFOLD ASSY, VSA, DR 11, (AND CAN BE USED  
 WITH THE RED / B3 SCANNER AS WELL)



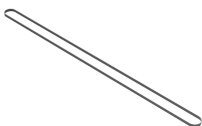
**Part Number:**  
 10-16-A290  
**Description:**  
 YOKE, MAUS / AUSS, LARGE DIAMETER SENSOR SHOE  
 YOKE ASSY, PITCH / CATCH, VACRS RESONANCE



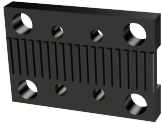
**Part Number:**  
 10-16-A292  
**Description:**  
 PITCH & CATCH SENSOR SLEEVE ASSY. 1.5" ID



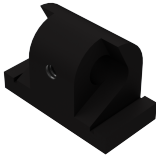
**Part Number:**  
 10-16-A294  
**Description:**  
 MAUS / AUSS, DUAL SENSOR YOKE. LONG THROW YOKE



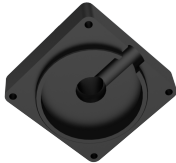
**Part Number:**  
 10-16-A47  
**Description:**  
 MAUS / AUSS, VARIABLE STROKE SCANNER, DRIVE BELT



**Part Number:**  
10-16-M216  
**Description:**  
RACK BRACKET, BELT CLAMP



**Part Number:**  
10-16-M240  
**Description:**  
BRACKET, SENSOR MOUNT



**Part Number:**  
10-16-M25  
**Description:**  
BLOCK, MOUNT, RESOLVER HOUSING



**Part Number:**  
10-16-M26  
**Description:**  
BASE, RESOLVER HOUSING



**Part Number:**  
10-16-M260  
**Description:**  
NUT, PLATE, QUICK ATTACH



**Part Number:**  
10-16-M293  
**Description:**  
SLEEVE, 1.50", PITCH & CATCH SENSOR



**Part Number:**  
10-16-M419  
**Description:**  
RAIL, AL EXTRUSION, 702MM LONG



**Part Number:**  
10-19-A21  
**Description:**  
MAUS / AUSS, (BLACK) FLEXIBLE VACUUM TRACK ASSY,  
42" LONG



**Part Number:**  
10-19-A22  
**Description:**  
INLET VALVE ASSY, TRACK ASSY



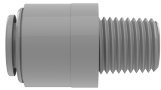
**Part Number:**  
10-19-A27  
**Description:**  
MAUS / AUSS FLEXIBLE TRACK CHECK VALVE ASSY



**Part Number:**  
10-19-M211  
**Description:**  
MAUS / AUSS, (RED) FLEXIBLE VACUUM TRACK, WITHOUT  
HARDWARE, 42" LONG



**Part Number:**  
10-19-M26  
**Description:**  
MAUS / AUSS, (BLACK) FLEXIBLE VACUUM TRACK,  
WITHOUT HARDWARE, 42" LONG



**Part Number:**  
10-19-P43  
**Description:**  
MAUS / AUSS, FLEXIBLE TRACK, INLET VALVE MALE  
CONNECTOR



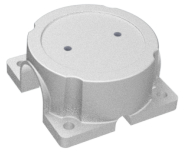
**Part Number:**  
10-21-A21  
**Description:**  
MAUS / AUSS, (RED) FLEXIBLE VACUUM TRACK ASSY,  
42" LONG



**Part Number:**  
10-23-A21  
**Description:**  
VACUUM CUP SAFETY RESTRAINT KIT. INCLUDES:



**Part Number:**  
10-23-A25  
**Description:**  
SAFETY RESTRAINT VACUUM CUP.



**Part Number:**  
10-23-A42  
**Description:**  
MODIFIED MOUNT, VACUUM CUP



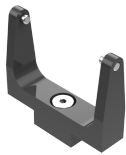
**Part Number:**  
10-23-M14  
**Description:**  
PAD, VACUUM, CONCAVE FACE, 6" DIAMETER



**Part Number:**  
10-26-A21  
**Description:**  
MAUS / AUSS, GIMBLE RING FOR RESONANCE AND UT  
SENSOR SLEEVE



**Part Number:**  
10-26-A22  
**Description:**  
MAUS / AUSS, GIMBLE RING FOR RESONANCE SENSOR  
VACRS SHOE



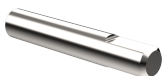
**Part Number:**  
10-27-A21  
**Description:**  
MAUS / AUSS, LOW FRICTION YOKE ASSY



**Part Number:**  
10-2-M212  
**Description:**  
PLATE, WEAR, CARRIAGE



**Part Number:**  
10-2-M227  
**Description:**  
GEAR, SPUR, PIN HUB REMOVED, 18 TEETH, CARRIAGE



**Part Number:**  
10-2-M23  
**Description:**  
HANDLE, ENGAGE AND DISENGAGE, CARRIAGE



**Part Number:**  
10-2-M26  
**Description:**  
MOUNT, PIN PLATE, QUICK ATTACH. WITHOUT THUMBSCREWS OR QUICK RELEASE PINS.



**Part Number:**  
10-2-M416  
**Description:**  
EYEBOLT, SHOULDERLESS, CARRIAGE



**Part Number:**  
10-49-A21  
**Description:**  
SENSOR SLEEVE ASSY FOR ALL 1/4" PULSE-ECHO SENSORS



**Part Number:**  
10-49-A214  
**Description:**  
DUAL EDDY CURRENT SENSOR SLEEVE ASSY HOLDER. (SUPERSEDES P / N SPC-292-DH)



**Part Number:**  
10-49-A215  
**Description:**  
ASSEMBLY, SPC-292 SINGLE EDDY CURRENT SENSOR HOLDER WITH BRUSH



**Part Number:**  
10-49-A217  
**Description:**  
ASSEMBLY, SPC-327 SINGLE EDDY CURRENT SENSOR HOLDER WITH BRUSH



**Part Number:**  
10-49-A218  
**Description:**  
DUAL SENSOR SLEEVE ASSY HOLDER, FOR EDDY CURRENT SPC-292 & SPC-327 SENSORS



**Part Number:**  
10-49-A22  
**Description:**  
MAUS / AUSS, SENSOR SLEEVE ASSY, 7 / 8" ID SLEEVE FOR 1 / 2"



**Part Number:**  
10-49-A24  
**Description:**  
MAUS / AUSS, SENSOR SLEEVE ASSY, 110 & 160 (170) kHz RESONANCE SENSORS



**Part Number:**  
10-49-A26  
**Description:**  
MAUS / AUSS, SENSOR SLEEVE ASSY, 110, 170, 270, & 320 kHz RESONANCE SENSOR



**Part Number:**  
10-49-A28  
**Description:**  
MAUS / AUSS, OUTER BUBBLER HOUSING



**Part Number:**  
10-49-M210  
**Description:**  
MAUS / AUSS, Inner Bubble Housing, 3 / 8" x 24 Thread



**Part Number:**  
10-49-M211  
**Description:**  
MAUS / AUSS, Inner Bubbler Housing, Special 7 / 16" x 27 Thread



**Part Number:**  
10-510-C2106  
**Description:**  
CABLE ASSY, MIA PROBE WITH 7 PIN AND 8 PIN LEMOS



**Part Number:**  
10-510-C228  
**Description:**  
UT SENSOR CABLES FOR THE DR-11 & VSA SCANNERS, BLACK, 00 LEMO TO MICRODOT, 14" LONG. SOLD EACH



**Part Number:**  
10-510-C253  
**Description:**  
CABLE ASSY, MAUS, DUAL MICRODOT MIA PROBE WITH LEMO.



**Part Number:**  
10-510-C277  
**Description:**  
UT SENSOR CABLES FOR THE DR-11 AND VSA SCANNERS,  
BLACK, WITH LEMO TO MICRODOT, 18" LONG



**Part Number:**  
10-52-A21  
**Description:**  
MAUS / AUSS, SPRING SLIDE ASSY, HIGH ANGLE 15 &  
20 DEGREES



**Part Number:**  
10-540-G1113  
**Description:**  
MAUS / AUSS MINI CART "P / N 15-560-G11 has  
superseded P / N 10-540-G1113\*



**Part Number:**  
10-540-G1237  
**Description:**  
MAUS / AUSS, LATEX, BOOTS FOR UT DRIBBLER  
ADAPTER, SET OF 12



**Part Number:**  
10-64-A21  
**Description:**  
ELECTRIC DUAL VAC ASSY, 115VAC (50 / 60Hz)  
VERSION. INCLUDES 2 EA. 16' HOSES.



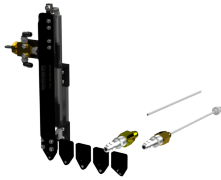
**Part Number:**  
10-70-A21  
**Description:**  
YOKE FOR 1-13 / 16" WIDE SENSOR HOLDER & #10-32  
MOUNT ASSY



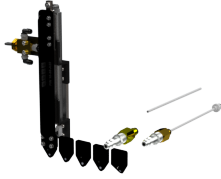
**Part Number:**  
10-7-M23  
**Description:**  
HOUSING COVER, HAND ENCODER



**Part Number:**  
10-7-M24  
**Description:**  
HANDLE, HAND ENCODER



**Part Number:**  
10-88-A21  
**Description:**  
MAUS / AUSS, 4" STROKE AIR SLIDE ASSY, FACTORY NEW



**Part Number:**  
10-88-A22  
**Description:**  
MAUS / AUSS, 5" STROKE AIR SLIDE ASSY, FACTORY NEW



**Part Number:**  
10-88-A23  
**Description:**  
MAUS / AUSS AIR SLIDE, 4" & 5" PRESSURE HOSE ASSEMBLY



**Part Number:**  
11-107-A21  
**Description:**  
MAUS / AUSS, 110 & 170KHz RESONANCE SENSOR VACRS SHOE ASSY



**Part Number:**  
11-107-A23  
**Description:**  
MAUS / AUSS, RESONANCE SENSOR, VACRS SHOE ASSY



**Part Number:**  
11-135-A21  
**Description:**  
VACRS 3, COUPLANT DELIVERY / RECOVERY SUBSYSTEM FOR PAUT, PE UT, & RESONANCE.



**Part Number:**  
11-510-C231  
**Description:**  
POWER SUPPLY, 24V MODIFIED CABLE, 3.5 FT, VACRS II



**Part Number:**  
11-5-A21  
**Description:**  
VACRS II ASSY



**Part Number:**  
11-5-A210  
**Description:**  
PLUG HOSE ASSY, VACRS



**Part Number:**  
11-5-A211  
**Description:**  
WIDE VACRS ARRAY YOKE, #8-32 MOUNT ASSY



**Part Number:**  
11-5-A213  
**Description:**  
PURGE HOSE ASSY, VACRS



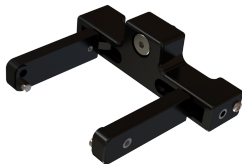
**Part Number:**  
11-5-A223  
**Description:**  
LONG YOKE #10-32 MOUNT ASSY



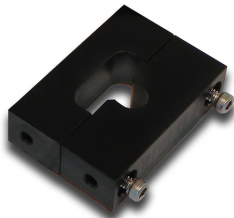
**Part Number:**  
11-5-A234  
**Description:**  
LONG YOKE #8-32 MOUNT ASSY, VACRS



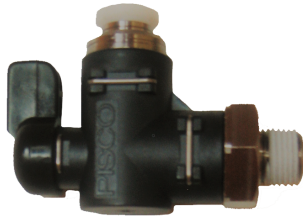
**Part Number:**  
11-5-A24  
**Description:**  
VACRS ARRAY SHOE ASSY DESIGNED FOR ARRAY WITH CASE DIMENSIONS OF 3.4"L x 0.500"W x 1.2"T



**Part Number:**  
11-5-A255  
**Description:**  
ASSY, ADJUSTABLE YOKE, 1W x 1.5D THROUGH 2W x 2.5D RANGE



**Part Number:**  
11-5-A28  
**Description:**  
HOSE WRANGLER, VACRS 02



**Part Number:**  
11-5-A413  
**Description:**  
MODIFIED BALL UNION VALVE, VACRS



**Part Number:**  
11-5-M226  
**Description:**  
STABILIZER, WATER PUMP INLET CONNECTOR, VACRS



**Part Number:**  
11-5-M25  
**Description:**  
BLOCK, 3.2 ARRAY HOLDER, VACRS



**Part Number:**  
11-5-M26  
**Description:**  
GASKET, 3.2 ARRAY HOLDER, VACRS



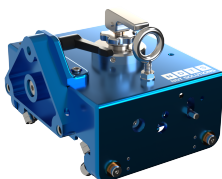
**Part Number:**  
11-5-M27  
**Description:**  
PLATE, MOUNTING, 3.2 ARRAY HOLDER, VACRS



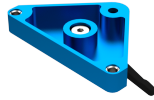
**Part Number:**  
12-25-A21  
**Description:**  
MAUS / AUSS, DUAL VAC ASSY, WITH 2 HOSES



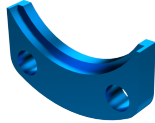
**Part Number:**  
12-25-A24  
**Description:**  
16' HOSE ASSY, DUAL VAC



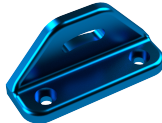
**Part Number:**  
15-3-A21  
**Description:**  
AUSS MOBILE CARRIAGE ASSY, VSA.



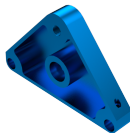
**Part Number:**  
15-3-A25  
**Description:**  
QUICK ATTACH PIVOT ASSY, CARRIAGE, AUSS MOBILE



**Part Number:**  
15-3-M212  
**Description:**  
CLAMP, ENCODER, CARRIAGE



**Part Number:**  
15-3-M214  
**Description:**  
MOUNT, CARRIAGE



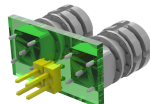
**Part Number:**  
15-3-M215  
**Description:**  
MOUNT, TRIANGULAR, CARRIAGE



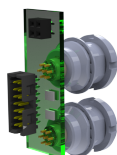
**Part Number:**  
15-4-A21  
**Description:**  
AUSS MOBILE SCAN ARM ASSY, VSA-25.



**Part Number:**  
15-4-A26  
**Description:**  
CONTROL CABLE HOSE ASSY, VSA



**Part Number:**  
15-4-A27  
**Description:**  
PCB ASSY, 00 LEMO P / N EPE.00.250.NTN, VSA  
SENSOR MANIFOLD



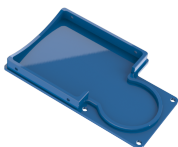
**Part Number:**  
15-4-A28  
**Description:**  
PCB ASSY, 7 PIN LEMO P / N EEG.1B.307.CLN, VSA  
SENSOR MANIFOLD



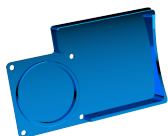
**Part Number:**  
15-4-M210  
**Description:**  
COVER, MOTOR HOUSING



**Part Number:**  
15-4-M212  
**Description:**  
BASE, MOTOR HOUSING



**Part Number:**  
15-4-M214  
**Description:**  
TOP, CAP, MOTOR HOUSING



**Part Number:**  
15-4-M215  
**Description:**  
BOTTOM, CAP, MOTOR HOUSING



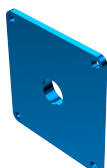
**Part Number:**  
15-4-M216  
**Description:**  
TOP, MOTOR HOUSING



**Part Number:**  
15-4-M217  
**Description:**  
TUBE, MOTOR HOUSING



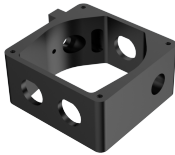
**Part Number:**  
15-4-M218  
**Description:**  
TUBE, ENCODER HOUSING



**Part Number:**  
15-4-M219  
**Description:**  
BOTTOM, CAP, ENCODER HOUSING



**Part Number:**  
 15-4-M220  
**Description:**  
 TOP, CAP, ENCODER HOUSING



**Part Number:**  
 15-4-M221  
**Description:**  
 TOP, ENCODER HOUSING



**Part Number:**  
 15-4-M222  
**Description:**  
 COVER, ENCODER HOUSING



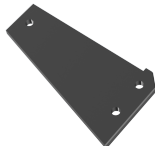
**Part Number:**  
 15-4-M223  
**Description:**  
 MANIFOLD, COMPRESSED AIR & H2O, SENSOR MANIFOLD



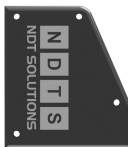
**Part Number:**  
 15-4-M224  
**Description:**  
 BRACKET, U-CHANNEL, SENSOR MANIFOLD



**Part Number:**  
 15-4-M225  
**Description:**  
 HOUSING, SINGLE SENSOR CONNECTORS, SENSOR MANIFOLD



**Part Number:**  
 15-4-M226  
**Description:**  
 COVER, TOP, SINGLE SENSOR CONNECTORS HOUSING,  
 SENSOR MANIFOLD



**Part Number:**  
 15-4-M227  
**Description:**  
 COVER, SIDE, SINGLE SENSOR CONNECTORS HOUSING,  
 SENSOR MANIFOLD



**Part Number:**  
15-4-M228  
**Description:**  
BRACKET, ANGLE, SENSOR MANIFOLD



**Part Number:**  
15-4-M229  
**Description:**  
BRACKET, VERTICAL CONNECTOR, LINEAR MOTION



**Part Number:**  
15-4-M234  
**Description:**  
RAIL, AL EXTRUSION, RELIEF CUTS, 702MM LENGTH



**Part Number:**  
15-510-C2128  
**Description:**  
CABLE, CONTROL, AUSS MOBILE, 16' LONG



**Part Number:**  
15-510-C2130  
**Description:**  
CABLE, ENCODER, CARRIAGE, AUSS MOBILE



**Part Number:**  
15-510-C2141  
**Description:**  
CABLE ASSY, AUSS MOBILE IPEX TO VSA SCANNER, 16'  
LONG. \*PULSE ECHO ONLY\*



**Part Number:**  
15-510-C2142  
**Description:**  
CABLE ASSY, VSA SCANNER TO AUSS MOBILE, 41 PIN,  
16' LONG \*RES, ET, MIA, P / C\*



**Part Number:**  
15-510-C2144  
**Description:**  
CONTROL CABLE ASSY, HANDSCANNER TO AUSS, 15' LONG



**Part Number:**  
15-510-C2145  
**Description:**  
CABLE ASSY, RESONANCE PROBE, 7-PIN LEMO +  
RESISTOR TO MICRODOT, 14" LONG



**Part Number:**  
15-510-C2151  
**Description:**  
EXTENSION CABLE, EDDY CURRENT SENSOR, AUSS  
MOBILE, 16' LONG



**Part Number:**  
15-510-C2152  
**Description:**  
EXTENSION CABLE, CONTROL, AUSS MOBILE, 16' LONG



**Part Number:**  
15-510-C2153  
**Description:**  
EXTENSION CABLE ASSY, AUSS MOBILE IPEX TO VSA  
SCANNER, 16' LONG, \*PULSE ECHO ONLY\*



**Part Number:**  
15-520-E18  
**Description:**  
POWER SUPPLY - 240W 24V 10A 240mV



**Part Number:**  
15-520-E26  
**Description:**  
AUSS-MOBILE LAPTOP CONTROLLER, RUGGEDIZED, WIN  
10, MS OFFICE, IMAGIN, FULL LICENSE KEY.



**Part Number:**  
15-540-A12  
**Description:**  
AUSS MOBILE VSA 25 SCANNER SHIPPING CASE WITH  
CUSTOM FOAM, FACTORY NEW



**Part Number:**  
15-540-A13  
**Description:**  
AUSS MOBILE CHASSIS AND CONTROLLER SHIPPING CASE  
WITH CUSTOM FOAM, FACTORY NEW



**Part Number:**  
15-5-A21  
**Description:**  
AUSS-MOBILE, ALL INSPECTION MODES. INCLUDES CONTROLLER WITH WIN10 OS, AUSS MOBILE & IMAGIN SOFTWARE



**Part Number:**  
15-5-A211  
**Description:**  
SENSOR MOUNT, GIMBLE RING, AND YOKE ASSY



**Part Number:**  
15-5-A212  
**Description:**  
AUSS, 2 WHEEL MINI HAND SCANNER, USED WITH ULTRASONIC ARRAY'S, INCLUDES WIDE "INDEX" YOKE ASSY, AND



**Part Number:**  
15-5-A213  
**Description:**  
PANEL MOUNT, IPEX CONNECTOR ASSY



**Part Number:**  
15-5-A22  
**Description:**  
AUSS, VARIABLE STROKE SCANNER AND TRACK ASSEMBLY, (KIT). 25" Max. Stroke.



**Part Number:**  
15-5-A23  
**Description:**  
MAUS / AUSS, PE ULTRASONIC SENSOR SET: 4ea PE TRANSDUCERS, 4ea SENSOR CABLES, 4 ea SLEEVES



**Part Number:**  
15-5-A24  
**Description:**  
AUSS, RESONANCE SENSOR SET: 110kHz AND 170 kHz, INCLUDES 2 TRANSDUCER HOLDERS & 2 COAXIAL CABLES



**Part Number:**  
15-5-A25  
**Description:**  
AUSS RESONANCE SENSOR SET: 270 kHz and 320 kHz, INCLUDES TRANSDUCER HOLDERS & 2 COAXIAL CABLES

**Part Number:**

15-5-A26

**Description:***AUSS, EDDY CURRENT SENSOR SET: 1ea. 1-20kHz and  
1ea. 5-50kHz, WITH PROBE HOLDERS IN CASE***Part Number:**

15-5-M213

**Description:***HOUSING, HAND ENCODER***Part Number:**

15-5-M236

**Description:***FRONT MOUNT PLATE, HAND ENCODER***Part Number:**

30-137-A21

**Description:***SCAN ARM ASSEMBLY, LW-25 \*DOES NOT INCLUDE TRACKS\****Part Number:**

99-16-M147

**Description:***MAUS / AUSS, PULLEY, FOR MOTOR AND RESOLVER***Part Number:**

99-510-C279

**Description:***CABLE ASSY, NDT INSTRUMENT CABLE, 00 LEMO TO  
MICRODOT, 6FT***Part Number:**

99-520-E115

**Description:***SWITCH, SELECTOR, 2 DIRECTION, GREEN LED, 22MM***Part Number:**

99-520-E116

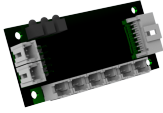
**Description:***PUSH BUTTON SWITCH, LAMP MODULE, SCREWCLAMP  
TERMINATION*

**Part Number:**

99-520-E117

**Description:**

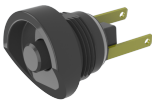
BLOCK, MOUNT COLLAR, SCREW CLAMP TERMINATION, 22MM

**Part Number:**

99-520-E1424

**Description:**

CONTROL BOARD, REMOTE SCANNER, ASGA-CCA-0013

**Part Number:**

99-520-E1425

**Description:**SWITCH, PUSH BUTTON, BLACK, N / O FASTON  
TERMINALS, HALF SHROUD**Part Number:**

99-520-E1426

**Description:**SWITCH, PUSH BUTTON, RED, N / O FASTON TERMINALS,  
HALF SHROUD**Part Number:**

99-520-E1428

**Description:**

CONN, 38999 COMP, RECEPTACLE, PIN, 15/D 19 19#20

**Part Number:**

99-520-E1429

**Description:**

CONN, 38999 COMP, RECEPTACLE, PIN, 13/C 98 10#20

**Part Number:**

99-520-E1430

**Description:**

CONN, 38999 COMP, RECEPTACLE, PIN, 17/E 26 26#20

**Part Number:**

99-520-E1433

**Description:**

CONTACT, SOCKET, CRIMP, 20-24 AWG, M39029/106-615



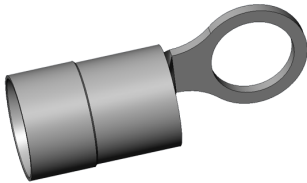
**Part Number:**  
99-520-E1476  
**Description:**  
MAUS, VARIABLE STROKE SCANNER DRIVE MOTOR



**Part Number:**  
99-520-E16  
**Description:**  
GEARMOTOR, 3540K024C158+30/1 246:1+MG10



**Part Number:**  
99-520-E1737  
**Description:**  
AC POWER CORD, NEMA 5-15P TO IEC 320-C13



**Part Number:**  
99-520-E180  
**Description:**  
TERMINAL, RING, CRIMP-ON NYLON INSULATED, 26-22 WIRE GAGE



**Part Number:**  
99-530-F118  
**Description:**  
SCREW, CAP, SKT HD, SHLDR, 0.3125-18 X 0.3130



**Part Number:**  
99-530-F122  
**Description:**  
SCREW, CAP, FLAT HD, #8-32 X 0.875 LG, 316 SST



**Part Number:**  
99-530-F123  
**Description:**  
SCREW, CAP, FLAT HD, #8.32 X 1.500 LG, 18-8 SST



**Part Number:**  
99-530-F128  
**Description:**  
#10-32 SHOULDER BOLT FOR DR-11 & VSA CARRIAGE BEARING ASSY



**Part Number:**  
99-530-F145  
**Description:**  
YOKE SHOULDER BOLT, #8-32



**Part Number:**  
99-530-F158  
**Description:**  
SCREW, CAP, SKT HD, #4-40 X 0.313 LG, 18-8 SST,  
PLAIN FINISH, COMPLIANT



**Part Number:**  
99-530-F17  
**Description:**  
SCREW, CAP, BUTTON HEAD, #6-32 X 0.250 LG, 316 SST



**Part Number:**  
99-532-F110  
**Description:**  
WASHER, FLAT, 0.172 ID X 0.375 OD X 0.06 THICK,  
18-8



**Part Number:**  
99-532-F16  
**Description:**  
WASHER, FLAT, 0.500 OD X 0.266 ID X 0.040 THK,  
316 SST



**Part Number:**  
99-534-F16  
**Description:**  
NUT, HEX, #8-32 X 0.125 THICK, 316 SST



**Part Number:**  
99-534-F20  
**Description:**  
NUT, HEX, 1/4-20 X 0.188 THICK, 316 SST



**Part Number:**  
99-540-G110  
**Description:**  
TUBE, ROUND, FLEXIBLE, 0.375 OD X 0.250 ID X 0.06



**Part Number:**

99-540-G1134

**Description:**

TUBE, SOLDER & SHIELD, SHIELD TERMINATOR, 2.7MM ID X 18.25MM

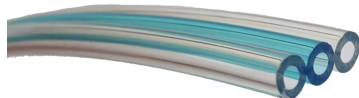


**Part Number:**

99-540-G1135

**Description:**

TUBE, SHRINK, 2 TO 1 SHRINK RATIO, 0.500 ID BEFORE SHRINKING



**Part Number:**

99-540-G129

**Description:**

TUBE, TRIPLE ROUND, FLEXIBLE, 0.250 OD X 0.125 ID. SOLD BY THE FOOT.



**Part Number:**

99-540-G151

**Description:**

TUBE, ROUND, FLEXIBLE, 0.250 OD X 0.125 ID X 0.063



**Part Number:**

99-540-G19

**Description:**

MAUS / AUSS, SCAN ARM DRIVE BELT. SOLD BY THE FOOT



**Part Number:**

99-560-M110

**Description:**

COUPLING, SOCKET, QUICK-DISCONNECT, SHUTOFF VALVE, 0.125



**Part Number:**

99-560-M126

**Description:**

SPRING, COMPRESSION, 0.043 WIRE DIAMETER X 0.406 HOLE DIAMETER



**Part Number:**

99-560-M132

**Description:**

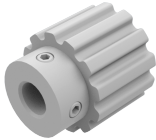
HANDLE, ADJUSTABLE, 0.250-20 X 0.750 STUD, BLACK NYLON



**Part Number:**  
99-560-M1360  
**Description:**  
FITTING, STRAIN RELIEF, M16 X 1.5 THREAD X 3.07  
BODY LENGTH, CABLE



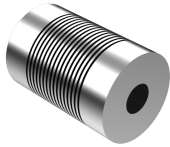
**Part Number:**  
99-560-M139  
**Description:**  
PIN, DOWEL, 0.125 OD X 0.625 LG, 316 SST



**Part Number:**  
99-560-M142  
**Description:**  
PULLEY, TIMING, 5.08 MM PITCH X 12 TEETH



**Part Number:**  
99-560-M143  
**Description:**  
SPACER, SHAFT, 0.250 ID X 0.375 OD X 0.250 LG, AL



**Part Number:**  
99-560-M144  
**Description:**  
MAUS / AUSS, SC SERIES FLEXIBLE SHAFT COUPLING  
RESOLVER COUPLING



**Part Number:**  
99-560-M145  
**Description:**  
MAUS / AUSS, CARRIAGE DRIVE BELT



**Part Number:**  
99-560-M148  
**Description:**  
O-RING, SQUARE CROSS SECTION, 0.750 ID X 1.000 OD



**Part Number:**  
99-560-M152  
**Description:**  
MAUS / AUSS, YOKE TO PLATE SPACER



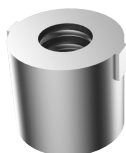
**Part Number:**  
99-560-M154  
**Description:**  
THREADED INSERT, NON-LOCKING, #6-32 ID X #12-28 OD



**Part Number:**  
99-560-M155  
**Description:**  
THREADED INSERT, LOCKING, #10-32 ID X 0.3125-18 OD



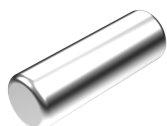
**Part Number:**  
99-560-M158  
**Description:**  
MAUS / AUSS PIN, PUSH BUTTON, QUICK RELEASE,  
0.375-24 X 0.375 THRD LG X 1.250 LG, SS



**Part Number:**  
99-560-M172  
**Description:**  
4-40 KEENSERT, MINIATURE, NON-LOCKING S/S, EXT  
THD= #10-32



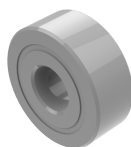
**Part Number:**  
99-560-M184  
**Description:**  
MAUS / AUSS, CARRIAGE FLANGED DRIVE PULLEY



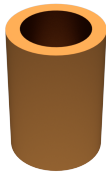
**Part Number:**  
99-560-M186  
**Description:**  
PIN, DOWEL, 0.125 OD X 0.375 LG, 316 SST



**Part Number:**  
99-560-M2157  
**Description:**  
SPRING BOLT, W/ SHLDR, #6-32



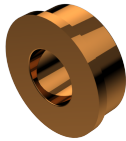
**Part Number:**  
99-562-B12  
**Description:**  
BEARING, BALL, DOUBLE SHIELDED, 0.1875 ID X 0.500  
OD



**Part Number:**  
99-562-B13  
**Description:**  
BEARING, SLEEVE, 0.313 ID X 0.438 OD X 0.625,  
LENGTH



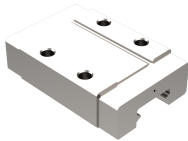
**Part Number:**  
99-562-B15  
**Description:**  
MAUS / AUSS, RESOLVER SHAFT, BEARING



**Part Number:**  
99-562-B16  
**Description:**  
BEARING, SLEEVE, FLANGED, 0.250 ID, SINTERED  
BRONZE



**Part Number:**  
99-562-B19  
**Description:**  
BEARING, BALL, DBL SHIELDED, 0.1875 ID, .375 OD,  
WIDTH .1250



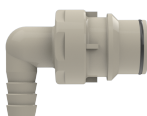
**Part Number:**  
99-563-B11  
**Description:**  
BEARING, BALL, TRUCK, 9MM WIDE LINEAR SLIDE



**Part Number:**  
99-570-A4195  
**Description:**  
MODIFIED PUMP, VACUUM, TWO THRU-FLOW SILENCERS  
CUT TO LENGTH



**Part Number:**  
99-570-P110  
**Description:**  
BARB, HOSE, SLIM LINE, .0625" ID, 303 SST



**Part Number:**  
99-570-P1113  
**Description:**  
PLUG, BARBED 90 DEG ELBOW, 0.375 CPLG X 0.750

**Part Number:**

99-570-P1121

**Description:**

FILTER, WATER, INLINE, 250 MICRON, FOR 0.375 T

**Part Number:**

99-570-P1113

**Description:**

TUBE, ROUND, FLEXIBLE, 0.250 OD X 0.170 ID X 0.040

**Part Number:**

99-570-P1130

**Description:**

TUBULATION, 0.035 ID X 0.061 OD X 0.551, SST

**Part Number:**

99-570-P1131

**Description:**

HOUSING, T-STRAINER, 0.375 FNPT PORT, MESH SIZE

**Part Number:**

99-570-P1132

**Description:**VACRS O2 REPLACEMENT FILTER, POLYPROPYLENE  
CARTRIDGE**Part Number:**

99-570-P1116

**Description:**

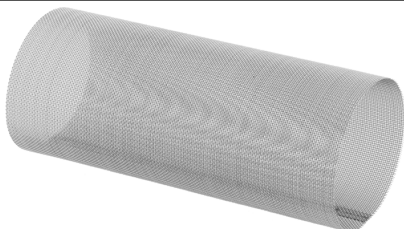
WYE, PUSH TO CONNECT, 0.250 TUBE OD X 0.156 TUBE

**Part Number:**

99-570-P1119

**Description:**

SUCTION CUP, AL INSERT, BLK POLYURETHANE

**Part Number:**

99-570-P1202

**Description:**REPLACEMENT MESH STRAINER SCREEN FOR THE VACRS= &  
VACRS DUAL VAC



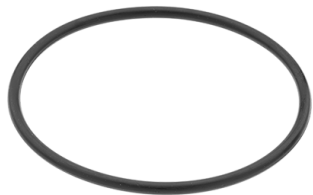
**Part Number:**  
99-570-P1216  
**Description:**  
SMALL O-RINGS FOR VACRS HOSE CONNECTORS. 5 / 16"  
OD x 3 / 16" ID



**Part Number:**  
99-570-P1217  
**Description:**  
LARGE O-RINGS FOR VACRS HOSE CONNECTORS. 7 / 16"  
OD x 5 / 16" ID



**Part Number:**  
99-570-P1230  
**Description:**  
ELBOW, MALE PIPE SWIVEL 90 DEG PUSH TO CONNECT,  
#10-32 X 0



**Part Number:**  
99-570-P1235  
**Description:**  
SEAL, 4.625 DIA, REPLACEMENT FOR NDTs PART#  
99-570-P1122



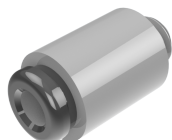
**Part Number:**  
99-570-P1236  
**Description:**  
SEAL, 3/8 NPT T-STRAINER, REPLACEMENT



**Part Number:**  
99-570-P1263  
**Description:**  
O-RING, ROUND CROSS SECTION, DUAL VAC  
REPLACEMENT, 0.070 W X



**Part Number:**  
99-570-P1264  
**Description:**  
PUMP, WATER, VARIABLE SPEED DIAPHRAM, 12V OR 24V,  
4.5 GPM



**Part Number:**  
99-570-P132  
**Description:**  
ADAPTOR, MALE PIPE PUSH TO CONNECT, #10-32 UNF X 0



**Part Number:**

99-570-P1369

**Description:**

COUPLING, PLUG, QUICK-DISCONNECT, NON-VALVED,  
0.125 CPLG X 0



**Part Number:**

99-570-P1370

**Description:**

ELBOW, MALE PIPE SWIVEL 90 DEG PUSH TO CONNECT,  
M5 X 6MM TUBE



**Part Number:**

99-570-P1371

**Description:**

ADAPTER, MALE PIPE PUSH TO CONNECT, M5 X 0.8 MALE  
X 0.250 TUBE DIA



**Part Number:**

99-570-P1372

**Description:**

ADAPTER, STRAIGHT, PUSH-TO-CONNECT, 0.156 OD TUBE  
X 0.250 MN

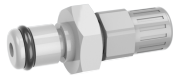


**Part Number:**

99-570-P1373

**Description:**

COUPLING, SOCKET, QUICK-DISCONNECT, VALVED, 0.125  
CPLG X 0.3



**Part Number:**

99-570-P1374

**Description:**

COUPLING, PLUG, QUICK-DISCONNECT, NON-VALVED,  
0.125 CPLG X 0



**Part Number:**

99-570-P1376

**Description:**

VALVE, NEEDLE, CARTRIDGE MOUNT, NITRILE SEAL,  
KNURLED KNOB



**Part Number:**

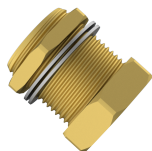
99-570-P142

**Description:**

ADAPTOR, MALE PIPE SWIVEL 90 DEG PUSH TO CONNECT



**Part Number:**  
99-570-P143  
**Description:**  
TEE, BRANCH, PUSH TO CONNECT, 0.250 NPT X 0.250 TU



**Part Number:**  
99-570-P144  
**Description:**  
COUPLING, PANEL MOUNT, 0.250 NPT ID X 0.750-20 OD



**Part Number:**  
99-570-P145  
**Description:**  
GAUGE, VACUUM, PANEL MOUNT, 30 TO 0 IN OF HG X 0.125



**Part Number:**  
99-570-P147  
**Description:**  
COUPLING, QUICK DISCONNECT, PANEL MOUNT, VALVED



**Part Number:**  
99-570-P148  
**Description:**  
ADAPTOR, QUICK DISCONNECT COUPLING FOR AIR, 0.250 NPT X 0.250



**Part Number:**  
99-570-P149  
**Description:**  
ELBOW, FEMALE PIPE SWIVEL 90 DEG PUSH TO CONNECT



**Part Number:**  
99-570-P16  
**Description:**  
REGULATOR, MINIATURE, M5 X .8



**Part Number:**  
99-570-P173  
**Description:**  
PLUG, MALE PIPE TUBE SOCKET, 0.250 CPLG X 0.438 PL



**Part Number:**  
99-570-P174  
**Description:**  
PLUG, MALE PIPE TUBE SOCKET, 0.125 CPLG X 0.313 PL



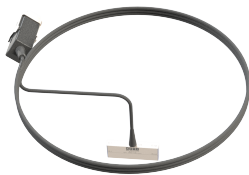
**Part Number:**  
99-570-P179  
**Description:**  
REGULATOR, FLOW, 0.250 TUBE X 0.250 TUBE



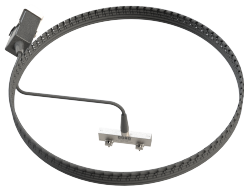
**Part Number:**  
99-570-P182  
**Description:**  
TUBE, ROUND, FLEXIBLE, 0.125 OD X 0.0625 ID X 0.031



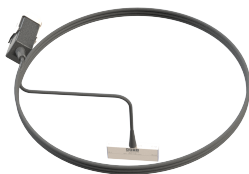
**Part Number:**  
99-570-P184  
**Description:**  
O-RING, SQUARE CROSS SECTION, 0.688 ID X 0.813 OD



**Part Number:**  
99-580-S164  
**Description:**  
UT LINEAR ARRAY, 5MHz, 64 ELE, .050" PITCH, .315 ELEV, .500" HW DELAY, IPEX, 15' CABLE



**Part Number:**  
99-580-S168  
**Description:**  
UT LINEAR ARRAY, 5 MHz, 64 ELE, .050" PITCH, .315" ELEV, NO DELAY, WITH MOUNT TABS, IPEX, 15' CABLE



**Part Number:**  
99-580-S169  
**Description:**  
UT LINEAR ARRAY, 5 MHz, 64 ELE, .050" PITCH, .315" ELEV, .750" HW DELAY, IPEX, 15' CABLE



**Part Number:**  
99-580-S170  
**Description:**  
MECHANICAL IMPEDANCE MODE PROBE MEDIUM TIP 3 / 8" DIA



**Part Number:**  
99-580-S171  
**Description:**  
UT LINEAR ARRAY, 5 MHz, 10 ELE, .025" PITCH,  
.500" HW DELAY, IPEX, 15' CABLE



**Part Number:**  
99-580-S187  
**Description:**  
UT LINEAR ARRAY, 5 MHz, 10 ELE, .025" PITCH,  
.500" HW DELAY, IPEX, 40' CABLE



**Part Number:**  
99-590-Z13  
**Description:**  
SPRING, COMPRESSION, 0.480 OD X 0.625 FREE LENGTH



**Part Number:**  
99-590-Z14  
**Description:**  
SPRING, EXTENSION, .250 OD X .037 WIRE DIAMETER



**Part Number:**  
99-590-Z17  
**Description:**  
SPRING, TORSION, LH WOUND MAUS / AUSS SENSOR  
MOUNTS



**Part Number:**  
99-590-Z18  
**Description:**  
SPRING, TORSION, RH WOUND MAUS/AUSS SENSOR MOUNTS



**Part Number:**  
AE02911  
**Description:**  
170 kHz RESONANCE SENSOR FACTORY NEW, COC INCLUDED



**Part Number:**  
AE02912  
**Description:**  
320 kHz RESONANCE SENSOR FACTORY NEW, COC INCLUDED



**Part Number:**  
AE02913  
**Description:**  
270 kHz RESONANCE SENSOR FACTORY NEW, COC INCLUDED



**Part Number:**  
AE02914  
**Description:**  
110 kHz RESONANCE SENSOR FACTORY NEW, COC INCLUDED



**Part Number:**  
RDG012TM  
**Description:**  
TRANSDUCER, HIGH RESOLUTION, 1 MHz, 0.250" DIA,  
REMOVABLE DELAY LINE, TOP MOUNT MICRODOT CONNECTOR DIA



**Part Number:**  
RDG022TM  
**Description:**  
TRANSDUCER, HIGH RESOLUTION, 2.25MHz, 0.250" DIA,  
REMOVABLE DELAY LINE, TOP MOUNT MICRODOT CONNECTOR



**Part Number:**  
RDG052TM  
**Description:**  
TRANSDUCER, HIGH RESOLUTION, 5 MHz, 0.250" DIA,  
REMOVABLE DELAY LINE, TOP MOUNT MICRODOT CONNECTOR



**Part Number:**  
RDG102TM  
**Description:**  
TRANSDUCER, HIGH RESOLUTION, 10 MHz, 0.250" DIA,  
REMOVABLE DELAY LINE, TOP MOUNT MICRODOT CONNECTOR



**Part Number:**  
RDG152TM  
**Description:**  
TRANSDUCER, HIGH RESOLUTION, 15 MHz, 0.250" DIA,  
REMOVABLE DELAY LINE, TOP MOUNT MICRODOT CONNECTOR



**Part Number:**  
RDL2-.500  
**Description:**  
0.250" DIAMETER DELAY LINE .500" LONG (Set of 5)



**Part Number:**  
*RDL2-0.75*  
**Description:**  
*0.250" DIAMETER DELAY LINE 0.75" LONG (set of 5)*



**Part Number:**  
*RDL2-1.00*  
**Description:**  
*0.250" DIAMETER DELAY LINE 1.00" LONG (set of 5)*



**Part Number:**  
*RDL2-1.25*  
**Description:**  
*0.250" DIAMETER DELAY LINE 1.25" LONG (set of 5)*



**Part Number:**  
*SPC-292-3A/1K*  
**Description:**  
*MAUS / AUSS, 1-20KHz LOW FREQUENCY EDDY CURRENT SENSOR PROBE*



**Part Number:**  
*SPC-292-3A/50K*  
**Description:**  
*MAUS / AUSS, EDDY CURRENT SENSOR PROBE, HIGH FREQUENCY, REFLECTION, 50-500kHz*



**Part Number:**  
*SPC-292-3A/5K*  
**Description:**  
*MAUS / AUSS, 5-50kHz LOW FREQUENCY EDDY CURRENT SENSOR PROBE*



**Part Number:**  
*SPC-327/100-10K*  
**Description:**  
*MAUS / AUSS, LOW FREQUENCY EDDY CURRENT PROBE (100Hz - 10kHz)*



**Part Number:**  
*SPC-327/100-1K*  
**Description:**  
*MAUS / AUSS, LOW FREQUENCY EDDY CURRENT PROBE (100Hz - 1kHz)*



**Part Number:**

*SPC-327/100-500HZ*

**Description:**

*MAUS / AUSS, LOW FREQUENCY EDDY CURRENT PROBE  
(100Hz - 500Hz)*